

Psidelights



Penn State Skull House

Est. 1890

May 2008

Upcoming Events

July 10-13

2nd Annual Psi Chapter Alumni Weekend/Arts Fest

Join us for a weekend of golf, a house tour, and a dinner presentation of the new colony! Reserve your room as part of our block at the Penn Stater by calling 800-233-7505. Our reservation # is 1DPH10709 and our block name is "Phi Kappa Sigma."

Stay tuned to www.psuskull.com for more details!

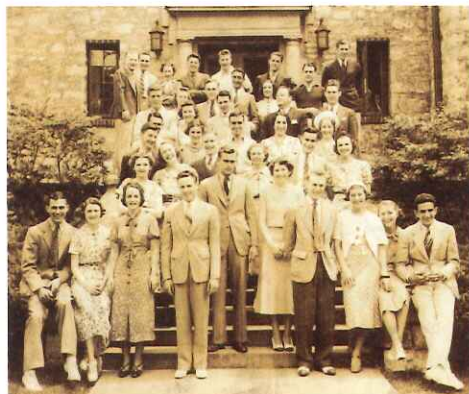
October 18

Homecoming vs. Michigan

From the Archives

Did you know that our online photo albums contain hundreds of great photos from our Psi Chapter's rich history, such as this undated photo? Visit www.psuskull.com to take a trip through our decades at Penn State. Take a few minutes to upload a few classic shots from your era as well.

Not yet registered on our website? Follow the First Time Login instructions on the home page and enter your Member ID (found above your name and address on the envelope of this mailing) when prompted.



Corporation Report

Our Heritage Continues

New Colony Members Gear Up to Carry On Phi Kap's Tradition of Excellence

By Otto Grupp III '51, Psi Chapter Corporation President; OHGEEIII@aol.com

For the past seven years, all of us have wondered when Psi Chapter would resurface at Penn State. This issue of *Psidelights* will allay any thought of a demise of Psi Chapter, and will confirm that the stately mansion house on 234 E. Beaver Avenue will reopen in September 2008. It will house a new, vibrant group of men that will carry on the tradition of excellence that we all knew in past years.

Every one of us will remember the reason we joined Phi Kappa Sigma, and the unique and special bond we shared with not only our pledge class, but with all the upperclassman in the house. Now this new group will have the opportunity to be the pledge class and breathe new life into our beloved fraternity. One day this group will be the nucleus that will invite, pledge, and lead to brotherhood a new group. Yes, Psi Chapter is back, and you will be proud as you return to the house to meet this outstanding group of young men.

Your financial support to the annual fund and the rental income during these seven years has enabled us to make the necessary house repairs and a few improvements, pay the mortgage, and maintain the website and publications for alumni. Recently the house appraisal for insurance purposes was completed and our insurance includes replacement cost coverage. Also, we have been able to correct any minor code violations that were present at the time of the annual State College Borough code compliance inspections. The

electrical, mechanical and interior and exterior architectural components have been thoroughly studied. **It has become abundantly clear that we must make a major investment in the chapter house.** The next steps will be to identify and prioritize the necessary renovations and improvements, calculate the resulting cost and develop the time line to complete. In the next two months we will present to you our blueprint to accomplish what I am sure will be an ambitious mission.

I have had the good fortune during my term as Corporation President to have a talented and dedicated group of Psi brothers working with me. This group never lost faith that we would persevere and rekindle our heritage.

Psi Chapter is over 900 strong and all of us, in one way or another, were touched and benefited from our formative years spent at 234 E. Beaver Ave. With this HERITAGE, how can we not put forth every possible effort to ensure that the future of our Phi Kappa Sigma Psi Chapter is a resounding success?



Phi Kap will move back in to our house at 234 E. Beaver Avenue this fall.

Report from the Colony

Phi Kap is Officially Back!

With 35 Members, Psi Colony Looks to Restore Our Legacy at Penn State

By Harvey Max Abitbol, President; hma142@psu.edu

It is with great excitement that I write to you as president of the newly installed Psi colony at Penn State. Following applications and a series of interviews through the fall semester and early spring semester, the Psi Interest Group began with 11 members attending a ten-hour retreat in the HUB on February 9th. With excitement and motivation we lifted our membership numbers by actively recruiting a diverse mix of members.



A 1951 graduate, Psi Chapter Corporation President Otto Grupp III shakes the hand of newly-initiated brother Arvind Balaji '10 at the April 12 recolonization ceremony at Penn State, when a new generation of Psi Chapter was born.

We quickly shifted discussions to elections, so we would have more organization within the Interest Group moving forward. Recruitment efforts skyrocketed with more manpower, the brotherhood began to form, and we transitioned from a couple of guys meeting and going to dinner to a huge group that took over dining commons and filled up classrooms. Our last member joined just after spring break and bumped us up to 35 members, strengthening us in character and intelligence, as highlighted by our overall GPA of 3.36.

Following spring break we visited the University of Pennsylvania to visit the Alpha chapter to learn as much about their chapter as possible. We gained more than we thought through the bonding and friendships that were formed over the duration of the trip. Everyone got to learn more about some group members and also got first-hand experience learning from a prestigious chapter of Phi Kappa Sigma. While we

still have goals yet to meet or exceed, our hard work this semester came to a pinnacle as we were re-installed as an official colony of Phi Kappa Sigma on Saturday, April 12th. **Phi Kap is officially back!**

I know I speak for the entire colony when I say we are looking forward to this coming 2008 fall semester. We hope to have a large number of guys in the house, and to use it for both social and brotherhood activities. We plan on teaming up with another fraternity and sorority for Greek Sing and Homecoming. Most importantly, we look forward to restoring the values and traditions of Psi, and becoming the best fraternity at Penn State. We look forward to seeing you this fall when we're back home at 234 E. Beaver Avenue.

Visit www.psuskull.com to view complete bios of all of our colony members!

From the Advisor

Re-Establishing the Skull Legacy

Psi Traditions and Legacy Still Apparent on Campus

By Eric Friberg '91

In February, the Phi Kappa Sigma Interest Group at Penn State was officially launched, and this group of young men has quickly fulfilled requirements set forth by the Phi Kappa Sigma National fraternity throughout this semester. They received official "colony" status on April 12, 2008, and have set their sights on gaining "chapter" recognition sometime in the fall of 2008.

It has been with great honor to serve on the Advisory Board for this endeavor. The interaction I have had with this group has reminded me of

the great experience I had as a Skull during my college years. But it has also afforded me the opportunity to be part

"The interaction I have had with this group has reminded me of the great experience I had as a Skull during my college years."

of something new and challenging. Although we have not had an active chapter on campus in over seven years, the traditions and legacy that have been

maintained since 1890 continue to resonate on campus to this day. This is what motivates this young group of gentlemen, and what motivates me to be a part of it.

Recolonization has moved quickly, and the gentlemen are looking forward to a very eventful fall semester. I encourage all alumni to be receptive to all outreach initiatives from these gentlemen as they are excited about re-establishing the Skull legacy. I look forward to seeing all of you back at the house this fall.

Report from the International Fraternity

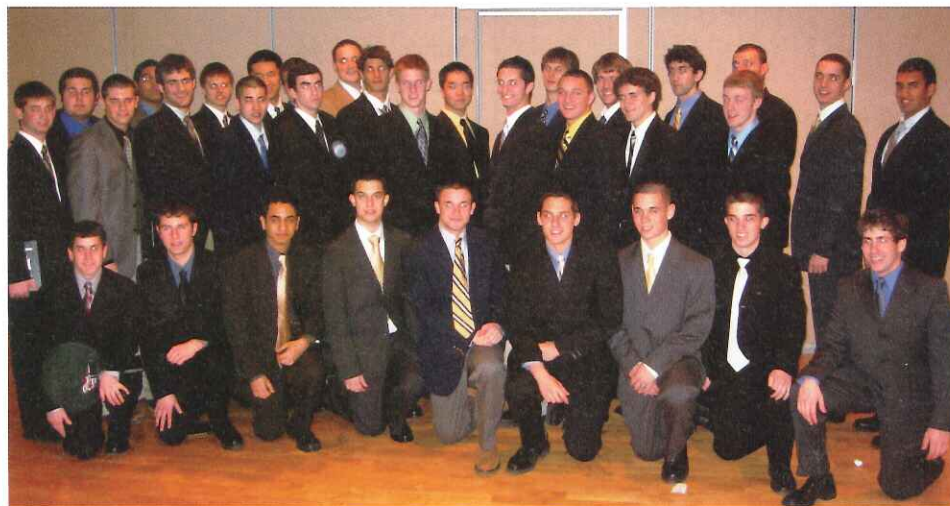
Looking Forward to Eventual Rechartering of Psi Chapter Skull House on Track to Recharter in Fall 2008

By Hamilton F. "Toby" Smith, Executive Director, Phi Kappa Sigma International Fraternity

The Phi Kappa Sigma International Fraternity extends its best wishes to all Psi Chapter alumni and the new colony at Penn State. We couldn't be more pleased with the outpouring of support and resulting success seen to date attracting numerous Penn State students to the re-opening of Psi Chapter. From the information sessions last fall where we started with just a couple of men, to the retreat held on campus in February numbering in the teens, to today where the group numbers 35, it has been truly exciting seeing such a commitment and desire for our organization's values.

We should also note that each and every one of these men has pledged to support our risk management policies, including our substance-free chapter house policy and our strict "no-hazing" policy.

We encourage all alumni to review the Expansion Guide, which can be accessed under "Start a Chapter" on the www.pks.org website, for a more detailed description of the period from colonization (each man is considered a "new member") to chartering (each man who meets the initiation criteria is initiated).



These 35 young men will make up the Psi Chapter of Phi Kappa Sigma, as early as fall 2008. The group was recolonized at Penn State on April 12.

We hope you will have a chance to meet these accomplished, dedicated, and committed young men at a future event. To be sure, strong alumni support is also vital to any successful chapter re-opening. We would like to thank you for your continued support and recognize the leadership of men like **Otto Grupp '51**, **Michael Rycheck '87**, **Eric Friberg '91** (Colony Advisor) and **Kevin Olsavsky '86** (Grand

Delta—Pennsylvania) who continue to help lead us all in keeping the chapter alive and well in our minds and now in helping to return it to campus. Without your and their continued dedication to Phi Kappa Sigma and Penn State, it just wouldn't be possible.

In closing, we look forward to the eventual re-chartering of Psi Chapter and the return of Phi Kappa Sigma to Penn State.

State of the Bone (The House, That Is)

By Kevin Olsavsky '86, Chair, House Building Committee

As Psi chapter recolonizes, the Housing Corporation is actively assessing the condition of the building and grounds and their ability to support the renewed mission of the fraternity.

Projects undertaken in the 1990s to install sprinklers and a fire alarm system, and to upgrade major portions of the electrical system have placed us in a relatively good position with regard to local ordinances. An ongoing program to replace exterior windows and repairs/reconstruction of exterior masonry have maintained the building envelope in

relatively good condition and helped to improve energy efficiency.

However, the condition of the interior common areas and most of the bedrooms is generally poor. Those who have recently visited the chapter house may agree that interior finishes last upgraded in the 1970s are showing the effects of three decades of heavy use. Conditions that may have been tolerable while the house was rented out, such as deteriorated main toilet rooms and hardwood floors on the first floor, have taken on increasing

urgency. In addition, a few significant but manageable structural conditions require immediate correction to avoid more costly repairs at a later date.

We are in the process of planning and prioritizing both short-term projects and longer range improvements to the chapter house to ensure that the undergraduates live in an attractive and comfortable environment that promotes fraternity and compares favorably with other living alternatives. Stay tuned to *Psidelights* and www.psuskull.com for more information.

2008 Colony Officers

Alpha

Harvey (Max) Abitbol '10
Advertising, East Brunswick, NJ
hma142@psu.edu

Beta

Mark Mezzone '11
Finance, Stormville, NY

Pi

Kyle Chen '11
Mechanical & Nuclear Engineering
Harleysville, PA

Tau

Josh Sohmer '10
Accounting/Economics, Levittown, PA

Sigma

Michael Markle '10
Supply Chain and Information Systems
Easton, PA

Upsilon

Jared Shavitz '10
Business Management & Journalism
Feasterville, PA

Recruitment Chair

Robin Fu '11
Electrical Engineering, Lansdale, PA

Iota

Cody Kutzer '10
Kinesiology, Blairsville, PA

Rho

Darrell Sabocsik '11
Undeclared, Coatesville, PA

Psi

DJ Broccoli '11
Telecommunications, Carmel, NY

Corporation Officers

Otto Grupp '51
Sam Curry '62
Jim Craft '63
Sean Lacey '78
Kevin Olsavsky '86
Michael Rycheck '87
Eric Friberg '90

*If you are interested in joining the corporation board or would like to learn more about it, contact **Michael Rycheck** at 718-625-6436 or mrycheck@aol.com*



News From the Bone

Samuel Eyer '48

(4 Birmingham Ct., Highlands Ranch, CO 80130-3943; njejer@comcast.net) I am fully retired in Highlands Ranch, a suburb of Denver. I am still playing drums in a swing group out of our church.

Grant Davis '49

(3109 Forsythia Blvd., Billings, MT 59102-0410; ginavivian@aol.com) I am still teaching flytying and flyfishing to grade school students. Having fun fishing, hunting, and playing golf.

Edward Horn '49

(46 Balfour Rd. E., Palm Beach Gardens, FL 33418-7023; c5ab@comcast.net) I am also a Korean War Veteran in addition to a WWII Veteran and an American ex-POW.

William B. Mullan Jr. '50

(P.O. Box 531, Elverson, PA 19520-0531) I have retired from Corporate Sales.

Vance Genzlinger '51

(1180 Lenox Rd., Bloomfield Hills, MI 48304-2022; vance@genzlinger.com) I married Jean Stewart (sister of Clifford Stewart, Phi Kappa Sigma 1954) in September 1954. We have 5 children who have given us 12 grandchildren. I spent 40 years as founder, owner and president of Genzlinger Associates, a software supplier to automotive parts suppliers. After 20 years of jogging, I switched to competitive racewalking where I received 6 world championship medals in the masters division. I have played the saxophone in senior citizens bands. After retiring in 2000, I returned to College at Oakland University in Michigan, receiving a BA in Philosophy in 2004 and a BS in Physics in 2007. I am currently attending OU Graduate School in Physics.

Richard Moreland '69

(809 Dunbrooke Ct., Frederick, MD 21701-9315; rich_mor@msn.com) I have retired from the public school system and have transitioned into the local community college where I teach psychology and history. Also, I

am currently the Director of Junior Tennis at the local tennis club where I also teach.

John Bravacos '82

(134 Woodgate Ln., Paoli, PA 19301-1449; jbravacos@gmail.com) I have been named the Philadelphia Regional Director for the Department of Housing and Urban Development Region III Office. In this position, I will serve as HUD's liaison to mayors, city managers, elected representatives, state and local officials, congressional delegations, stakeholders and customers in Region III, which includes Delaware, Maryland, Pennsylvania, Virginia, West Virginia and Washington D.C.

Don Adam '87

(11576 New London Dr., Creve Coeur, MO 63141-8345; nitlionstl@aol.com) I was named chief development officer of Rehab-Care Group in St. Louis.

In Memoriam

Since the last *Psidelights*, we have learned of the following deaths:

Paul Broman '32
George Harvey '35
Henry McFall '36
Frederick Rothermel '38
Conrad Busch Sr. '39
Joseph Robb '39
Richard Young '40
Charles Daiker '48
Howard Dudley III '48

Psi Chapter mourns the loss of our Brothers and extends our sympathy to their family and friends.



Skull House Boasts a Growing List of Success Stories

How Our Chapter's Alumni Are Making a Difference in the World, One Brother at a Time

Each Skull House alum has a unique story to tell. We try our best to share your stories with the brotherhood through Psidelights and our website, www.psuskull.com. The brothers below have all been featured in profiles in print and/or online, and we hope you've enjoyed reading their stories. If you missed any of them, they are all available on our site in the Alumni Profiles section (you must be logged in to view this page).

Hal Muncaster '34 (Deceased 8/11/05)

Hal worked at the U.S. Steel headquarters in Pittsburgh for most of his career and enjoyed playing golf and bridge. He always looked back with kind feelings of his brothers in Phi Kappa Sigma.

Jack Forney '35

Jack was named Realtor of the Year in 1981 by the Lake County Association of Realtors. He also spends time fundraising for the Boy Scouts and was awarded the Silver Beaver in 1971, one of Boy Scouting's highest adult honors.

George Harvey '35 (Deceased 3/08)

George was one of the world's foremost experts on fly fishing and got his start at the Skull House, teaching his brothers how to tie fishing lures, or flies. He taught his first class in 1933 and continued until just a few years ago.

Joe Robb '39 (Deceased 3/07)

At Penn State, Joe played intramural sports and baseball and loved spending time at the Rathskellar with his PKS brothers. He spent his career in Pittsburgh and retired to Landfall, where he enjoyed playing golf, playing the alto sax and making golf clubs.

George Blakslee '42

George spent over 30 years as a geologist working around the world – Saudi Arabia, Saskatchewan, Canada, Turkey, Spain, Canary Island, Pakistan, Teheran, Iran, Algeria and Los Angeles. Now, he lives in Wisconsin and manages the family dairy farm.

Henry Keller '43

Having served on the alumni board for 30 years, Henry is a Phi Kap through and through! His father and five uncles were all members of the fraternity and he met his wife, Ann, at the house.

Norm Marlin '48

Norm calls Happy Valley his home, where he settled after serving in the military, graduating from Penn State, and working all over the country. He still enjoys the camaraderie of brothers from his era who also live at The Village at Penn State.

Bob Stevens '48

Bob spent nearly 50 years in advertising before retirement. Today, keeps busy as a volunteer with his church and the public library of Palm Harbor, FL. He is active as a volunteer tutor for the literacy council at the library and enjoys helping others to read, write and speak English better.

Grant Davis '49

Grant served as sergeant in the Army during World War II and worked for the U.S. Forest Service until 1981. He loves hunting, fishing, golf and tying flies.

Richard Schweiker '50

After serving in the Navy, he spent 22 years in government as a U.S. Congressman, U.S. Senator, member of the U.S. Cabinet, and even as the vice presidential running mate of Ronald Reagan.

Tom Woolaway '54

Tom has devoted much of his life to Penn State and to helping others to have successful business careers. He has received the Penn State University Alumni Fellow award and continues to be active in his community and his church.

Bill Rother '55

Bill has been playing music professionally for 50 years. Since then, he's played for a "president, a queen and a king." Read the profile online to find out who they were!

Chester Buckenmaier '59

Chester is currently president of the Penn State Alumni Association, Ft. Myers Chapter. He is enjoying retirement and loves hitting golf balls, racing sailboats and spending time with his family.

Alan Davidson '60

Alan went to law school (Harvard) and business school (Pitt) and worked in various investment management and trust positions

in Pennsylvania and Ohio, retiring in 2005. He still supports Skull House because of his wonderful experience as a member.

Sam Curry '62

Sam served in the Navy and spent 31 years working for U.S. Steel. He was active in the Phi Kap Alumni Corporation and served as president and vice president.

Jim Broadhurst '65

Jim is the Chairman and CEO of Eat 'n Park Hospitality Group, and currently serves as the chair of the Penn State Board of Trustees.

Joe Koletar '66

Joe served in the Army and then worked for the FBI from 1969 to 1994. He is currently principal of Global Investigative Services, Ernst & Young LLP. He is also a member of the advisory board of the Penn State Criminal Justice Institute.

Thomas L. Hebel '77

Thomas owns a landscape design company and a garden and home center. He served on the alumni board for several years after graduation.

Eric McCarl '81

Eric reached the No. 1 position on the New Age music charts for January 2004. He and his wife, Julie, live in California with daughters Erin Aja and Amanda Paige.

Steve Gruber '91

Steve owns several restaurants on the west coast, including Johnny Garlics. He's also a pilot. And, he has many great fraternity memories, including how he got started in his current restaurant career.

Ken Dolman '94

Ken's band, No North, has released three CDs over the past four years and he still keeps in touch with many of his Phi Kap brothers.

Would you like to nominate yourself or another brother to be featured in an upcoming profile? Send the name and a brief recap of why he should be profiled to Mike Rychek at mrychek@aol.com, or with the enclosed form. You can also submit your news and photos on our website, www.psuskull.com.

Thank You, Donors!

The following alumni contributed to our 2007 Annual Fund which ran January 1 – December 31, 2007.

2007 Annual Fund

1890 Club (\$890+)

Otto Grupp III 1951

Stellis Aequos Durando Club (\$500 - \$889)

Thomas P. Woolaway 1954
James S. Broadhurst 1965
Stephen A. Kelly 1983
Michael P. Rycheck 1987

Psi Club (\$250 - \$499)

Jake C. Forney 1935
Hobart Pollard 1950
Ralph E. Breidenthal 1953
Tom H. Brasher 1955
Graham W. Hume 1955
John C. Molloy III 1956
Robert K. Betts 1957
Don F. Marshall 1968
Randall C. Runk 1974
Christopher J. McKown 1977
Sean M. Lacey 1978
David T. Simmons 1983
Kevin W. Konopko 1985
Richard James Cassidy 1989
David R. Sieling 1993
John C. Stuntebeck 1994

Club Skull (\$100 - \$249)

Miles W. Smith 1943
Richard K. Titley 1944
Charles W. Daiker 1948
Norman H. Marlin 1948
Grant Davis 1949
Henry E. Rea 1949
Malcolm R. Fisher 1950
David W. Christopher 1951
James W. Davis 1952
William L. Hafley 1953
Frederick P. Le Van 1954
R. Nevin Rupp 1954
Robert "Bob" Brown Jr. 1955
Robert B. Mowery 1955
Joseph F. Captain 1956
Fred W. Montanari 1956
Robert W. Springer 1956
John F. Albrecht 1957
Charles J. Yarbrough 1957
Harold E. Pellow 1958
Jacob C. Shook 1958
Chester Church Buckenmaier Jr. 1959

Noel B. DeCavalcante 1959
Alan John Davidson 1960
William T. Euwer 1961
Kenneth C. Louis 1961
Henry J. Oppermann Jr. 1961
William H. Swishhelm 1961
David T. Allison 1962
Samuel B. Curry Jr. 1962
G. Barry Esslinger 1963
Joseph W. Koletar 1966
Robert E. Brown 1969
Charles P. Finney 1969
William F. Gaul 1969
John Lapinski 1969
G. Michael Breneiser 1972
Christopher S. Woodward 1973
John C. Bender 1978
James M. Kerrigan 1978
Richard Harry Deutsch 1981
Eric P. Johnston 1981
Jeffrey Brightman 1982
Michael S. Paul 1985
Brent R. Beabout 1987
Christopher T. Genovese 1987
Michael S. Cardonick 1990
Michael Grigor 1990
Mark A. Barausky 1991
Richard J. Caccamise 1991
Ty A. Torres 1991
Donald John Pohland 1992
Eric T. Arcudi 1993
Ryan P. Woodring 1994
Jason P. Smith 1995

Dues Giver (Up to \$99)

Anne M. Burns 1942
George W. Blakslee 1942
Robert M. Jameson Jr. 1943
James E. Drylie 1948
Samuel B. Eyer 1949
Paul Corbiere 1949
Edward W. Horn 1949
John W. Mitchell 1949
Richard L. James 1950
Ronald T. Coder 1951
Vance Genzlinger 1951
C. Nat Netscher 1951
Thomas L. Davies 1954
William Otto Rother 1955
Thomas H. Schneider 1958
John B. Haberlen 1962
James B. Clark 1968
Charles W. Schwambach 1970
Guy Randall Ackley 1971

Mark Roy Bugos 1978
James R. Hartman 1992

2008 Annual Fund*

In 2008, we've seen our best start to the giving year EVER! Thank you to the following alumni who have made donations since January 1, 2008.

1890 Club (\$890+)

John B. Goldham 1948
Otto Grupp III 1951
Michael N. Raiser 1962

Psi Club (\$250 - \$499.99)

James W. Davis 1952
Ralph E. Breidenthal 1953
G. Bill Hume 1955
John C. Molloy III 1956
Robert B. Jack 1980

Club Skull (\$100 - \$249.99)

Frederick P. Le Van 1954
Robert B. Mowery 1955
Nicholas S. Molloy 1959
Richard C. Solt 1960
David T. Allison 1962
John B. Haberlen 1962
Robert E. Brown 1970
Mark R. Denkowski 1977
Eric P. Johnston 1981
Albert Joseph Berardocco 1982
Jeffrey Brightman 1982
Christopher T. Genovese 1987
Michael Douglas Rew 1990
Tim M. Markart 1994
Benjamin S. Lewis 1995

Dues Giver (Up to \$99)

Jennifer Silvoy Capezzuti
Ronald T. Coder 1951
Vance Genzlinger 1951
Noel B. DeCavalcante 1959

**Reflects gifts received as of April 9. Add your name to the 2008 Honor Roll by making a gift today! You can either send in the enclosed form with your check, or make a credit card contribution by calling 800-975-6699 or on our website at www.psuskull.com.*